

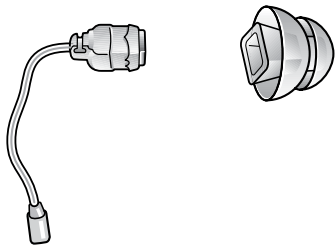
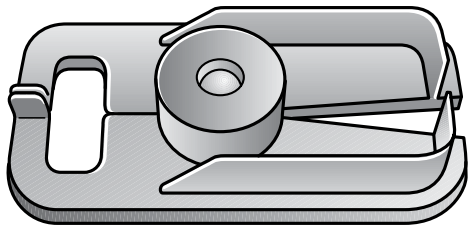


# Power Dome Guide

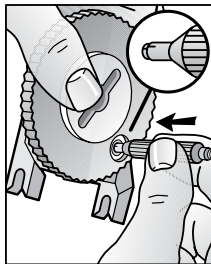
ReSound



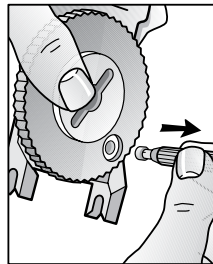
rediscover hearing



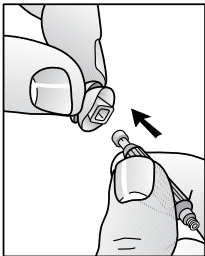
1



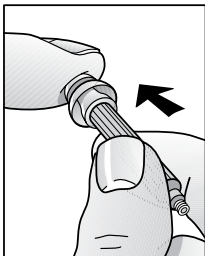
2



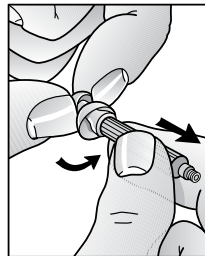
3



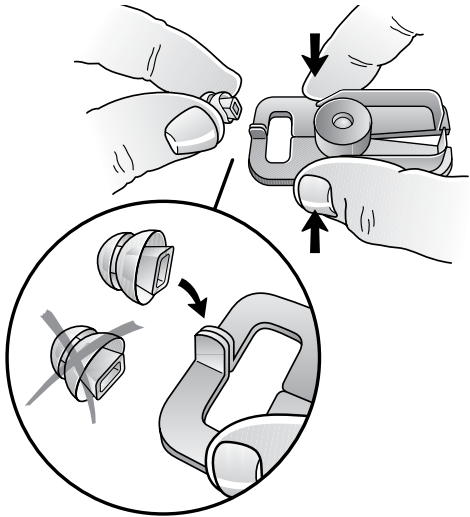
4



5



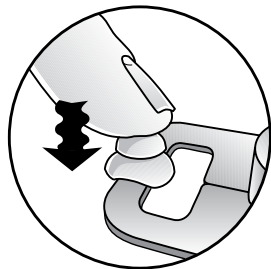
6



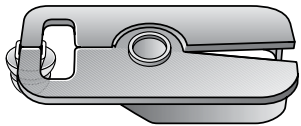
7



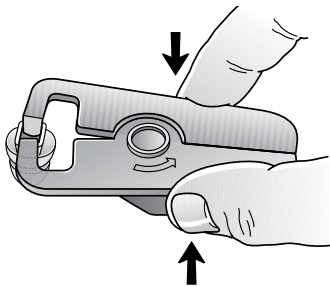
8



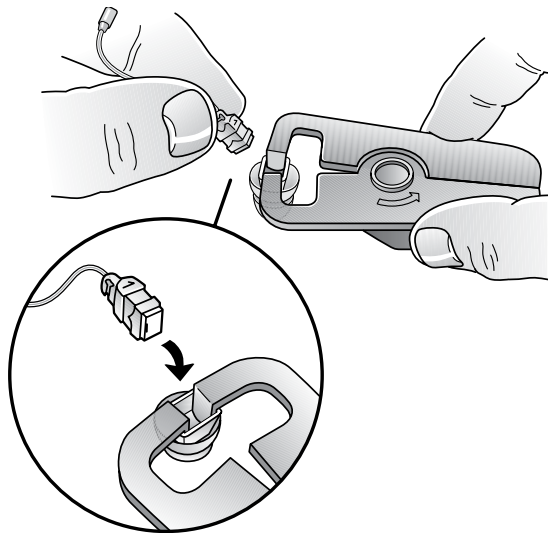
9



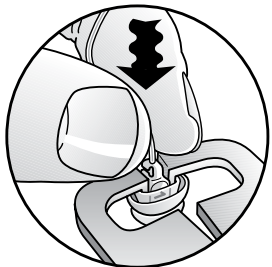
10



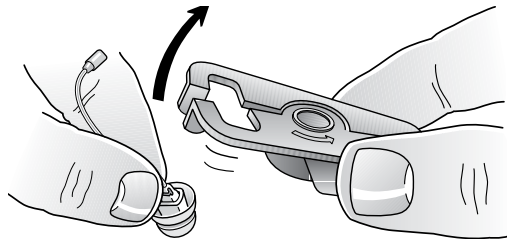
11



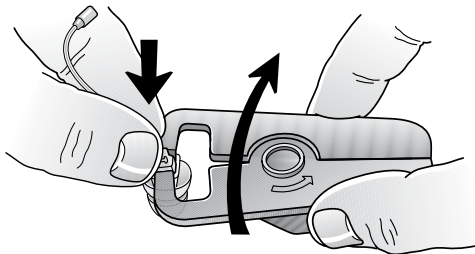
12



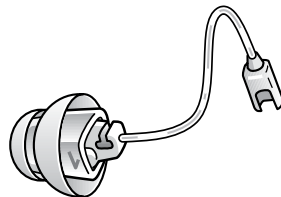
14



13



15



### **Worldwide Headquarters**

GN ReSound A/S  
Lautrupbjerg 7  
DK-2750 Ballerup, Denmark  
Tel.: +45 45 75 11 11  
Fax: +45 45 75 11 19  
[www.resound.com](http://www.resound.com)

### **United Kingdom**

GN ReSound Ltd.  
1 Landscape Close  
Weston Business Park  
Weston-on-the-Green  
Oxon OX25 3SX  
Tel.: +44 1869 343 500  
Fax: +44 1869 343 466  
[www.gnresound.co.uk](http://www.gnresound.co.uk)



Any issues relating to the EU Medical Device  
Directive 93/42/EEC should be directed to  
GN ReSound A/S

# ReSound



rediscover hearing